

CHS PROM DRESS CODE Recommendations

The CHS staff and administration
want you to make good choices.
We are not trying to inhibit your
style.

Prom should be fun,
but we want everyone to be
comfortable and safe.

**With modesty in mind, the
following dress code
guidelines
are recommended for the
CHS Prom.**

#1

Dresses may not be cut below the bust line.

The bust continues around your sides directly under the armpit. With arms down at your side, if flesh touches flesh below the bust line, the dress is inappropriate.



**This dress
is
appropriate**

**BUST LINE
(on the
side)**

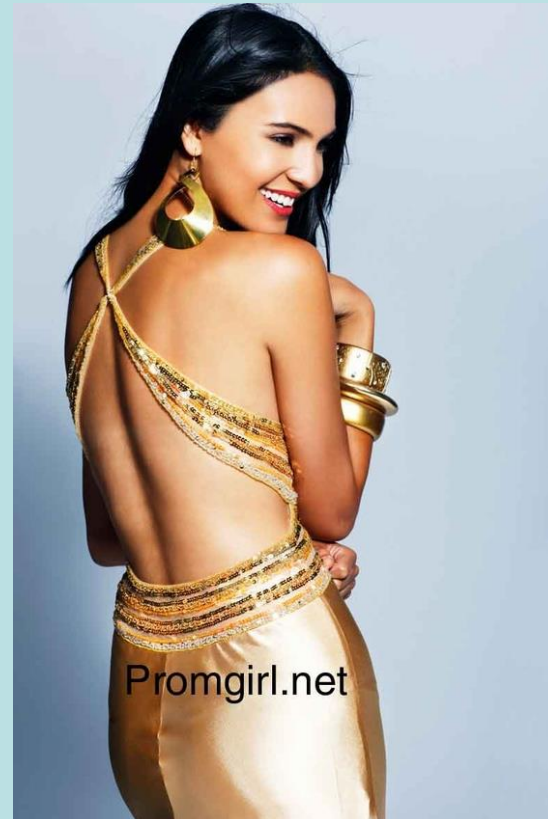
BUST LINE

UNACCEPTABLE DRESSES



#2

Dresses may be backless as long as they are not cut below the naval.



These dresses meet the dress code. Please notice how the bust is covered on the sides.

UNACCEPTABLE DRESSES



#3

Midriffs will not be exposed.

This includes both front and side.

With arms down at your side, if flesh touches flesh in the midriff section, the dress is inappropriate.



UNACCEPTABLE DRESSES



#4
Dresses may not have a slit that exceeds mid-thigh. This is fingertip length.

This dress meets dress code.



UNACCEPTABLE DRESSES



There are many beautiful and stylish dresses that do meet dress code.



CHS Prom

Make good decisions.

Be safe.

Have fun.

Formal Dress Code

Girls:

- * Dresses must be formal, short or long, appropriately fitting and modest.
- * Hemlines or slits for dresses must be no shorter than 2 inches above the knee.
- * No extreme low backs, low necklines, visible midriffs, straps or cutouts below the traditional bra line.
- * Strapless dresses and spaghetti straps are allowed provided they follow the previous rules.
- * Dress shoes only (no tennis shoes or slippers)

Boys:

- * Tuxedos, Suits, or Sport coats with dress pants.
- * No blue jeans.
- * No opened toed shoes.
- * No extreme colored shoes
- * No bandannas, baseball caps, or non formal hats.
- * Dress shoes only (no tennis shoes or slippers)